

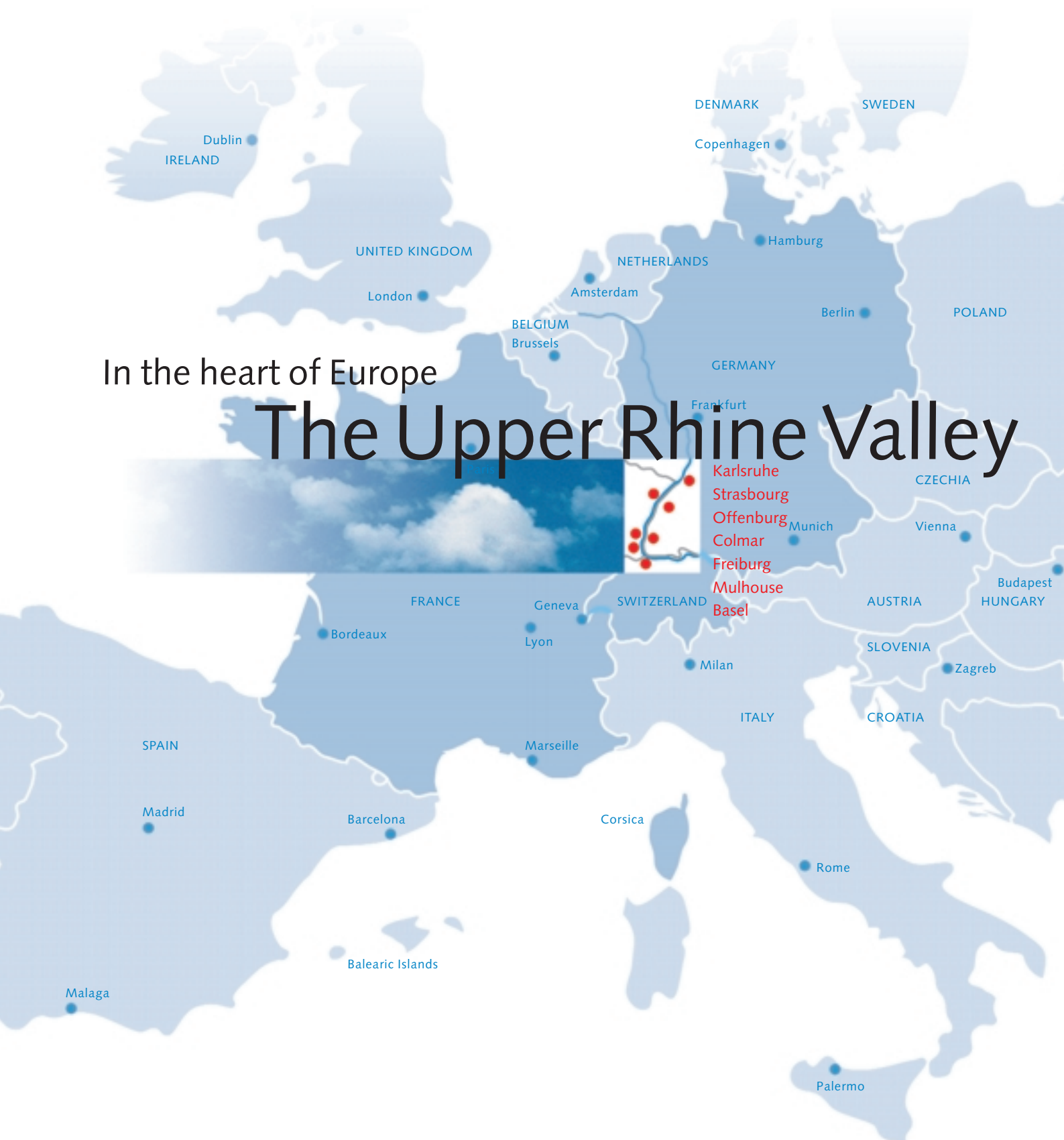
Where science
drives economic
development.

Where markets
are easy to serve.

Where different
languages are a
way of life.

In the heart of Europe

The Upper Rhine Valley



Key factors of the area

An economy based on science and engineering skills with many leading companies in biotechnology, information and communication technology, nanotechnology and microsystems-technology.

Among the most thriving economic regions of Germany, France and Switzerland with a market potential of more than 80 million consumers within a radius of 500 km.

A high density of internationally renowned research institutions.

A meeting point of Germanic and Romanic cultures with a high quality of life.

Cultural diversity and world-class cultural institutions and attractions in the major cities – without the disadvantages of a large metropolis.

A highly qualified and motivated workforce both at academic and specialised worker levels (trained in excellent universities, technical high-schools and in-house training programs for skilled workers).

An internationally oriented business climate with favourable conditions for setting up new companies.

A few highlights

TechnologieRegion

Karlsruhe (Germany)
Centre of applied technologies, especially IT.

Strasbourg/Alsace (France)
Seat of major European institutions and many global companies.

Freiburg (Germany)
Center of applied solar energy and environmental technology systems.

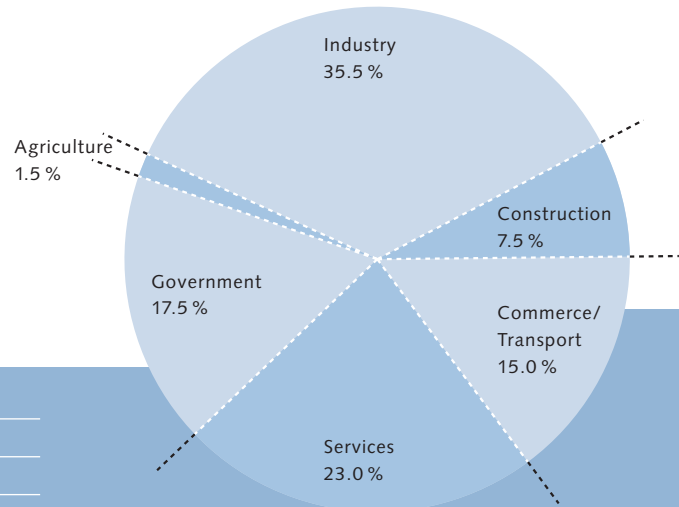
Basel Area (Switzerland)
Centre of Pharma and Biotech Companies and of financial services for the region.

Vosges, Black Forest, Jura
Tourism and leisure activities within half an hour from the economic centres.

Three countries – one region

Some statistics

Population (1999)	4.9 million
GNP (US-\$, 1996)	111.5 million
GNP per capita (US-\$, 1996)	23 000



Economic structure

Percentage of GNP

(Source: Das Dreiland – Die Zahlen, 1998)



Nobel laureates since 1970

- 1974 Friedrich August von Hayek (Economics)
- 1978 Werner Arber (Medicine)
- 1984 Georges Koehler (Biology)
- 1987 Susumu Tonegawa (Medicine)
- 1987 Jean-Marie Lehn (Chemistry)
- 1996 Rolf Zinkernagel (Medicine)

Typical crossborder projects

Crossborder cooperation has a long tradition in the Upper Rhine Valley, not only in the economy but also in the public sector.

Some successful examples:

Biovalley

A network for companies, universities and research institutes in all fields of Life Science.

EuroAirport

International airport for Mulhouse (France), Basel (Switzerland) and Freiburg (Germany).

EUCOR

A network of the seven universities of Basel, Mulhouse, Freiburg, Strasbourg and Karlsruhe.

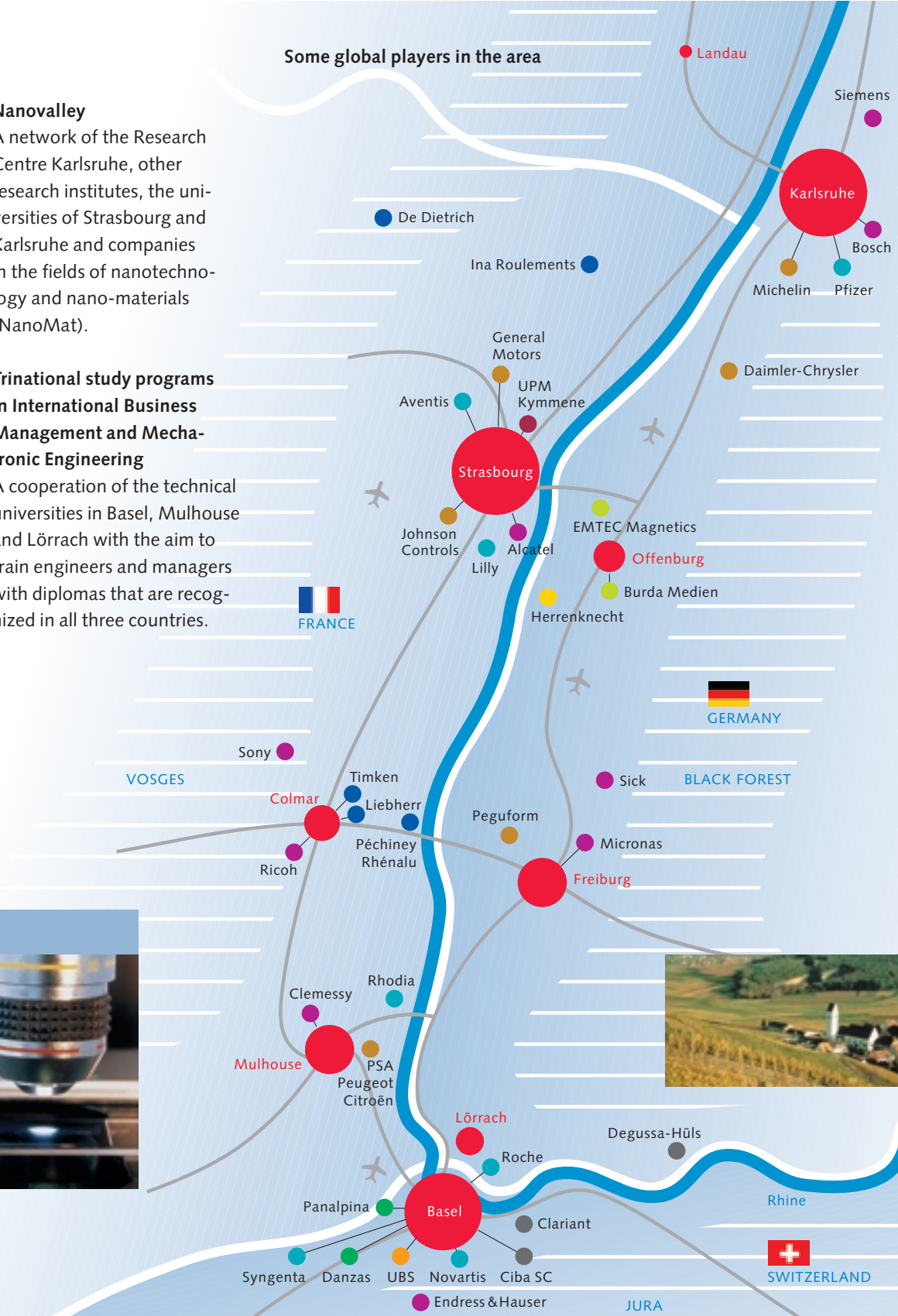
Nanovally

A network of the Research Centre Karlsruhe, other research institutes, the universities of Strasbourg and Karlsruhe and companies in the fields of nanotechnology and nano-materials (NanoMat).

Trinational study programs in International Business Management and Mechatronic Engineering

A cooperation of the technical universities in Basel, Mulhouse and Lörrach with the aim to train engineers and managers with diplomas that are recognized in all three countries.

Some global players in the area



Further major companies

A. Raymond, Lörrach • Alcon Pharma, Freiburg • Aluminium-Werke Wutöschingen, Wutöschingen • Badische Tabakmanufaktur (Reemtsma), Lahr • Basell Polyolefine, Kehl • Basler Versicherungen, Basel • Bayer Polymères, La Wantzenau • Behr, Rouffach • Bell, Basel • Brennet, Bad Säckingen • Coop, Basel • CPC Knorr, Duttlenheim • Credit Suisse, Basel • Crossair, Basel • Deutsche Telekom, Freiburg • Dow Chemical, Drusenheim • EDEKA, Offenburg • Ekato Rühr- und Mischtechnik, Schopfheim • Feldschlösschen, Rheinfelden • Fort James, Kunheim • Friedrich Grohe, Lahr •

GeneScan Europe, Freiburg • Gödecke Parke Davis, Freiburg • Goodyear, Philippsburg • Granini, Sarre-Union • Hager, Obernai • Hella Innenleuchten-Systeme, Wembach • Helvetia Patria, Basel • Hukla-Werke, Gengenbach • Hobart (Illinois Tool Works), Offenburg • INA Nadellager Schaeffler, Lahr • JBL/Syral/Staral, Marckolsheim • KPNQuest, Karlsruhe • Kraft Foods, Lörrach • Kronenbourg, Strasbourg • Kuhn, Saverne • Lohr Industrie, Duppigheim • Mahle • Pistons de Colmar, Ingersheim • Mars Alimentaire, Haguenau • Messier Bugatti, Molsheim • Migros, Münchenstein •

Millipore, Molsheim • National Versicherungen, Basel • L'Oréal, Karlsruhe • Osram, Molsheim • Rohm and Haas, Lauterbourg • Roquette Frères, Beinheim • Sedus Stoll, Waldshut-Tiengen • SEW, Bruchsal • Sharp, Soultz • Sotralentz, Drulingen • Steelcase Europe, Strasbourg • Sto, Stühlingen • Synthes-Stratec, Oberdorf • Streck Transport, Lörrach • SmithKline Beecham, Bühl • Superba, Mulhouse • Tesa (Beiersdorf), Offenburg • UHU, Bühl • UPAT, Emmendingen • Vantico, Basel • Vita Zahnfabrik H. Rauter, Bad Säckingen • Vitra, Weil • Wrigley, Biesheim • Würth, Erstein • Zahoransky, Todtnau

- Financial Services
- Electronics
- Life Sciences
- Automobile Industry
- Communication
- Forwarding
- Chemical Industry
- Construction
- Mechanical Industry
- Paper

An initiative of

- ADA – Agence de Développement de l'Alsace
- ADIRA – Association de Développement du Bas-Rhin
- Basel Area Business Development
- CAHR – Comité d'Action Economique du Haut-Rhin
- Chambers of Commerce and Industry Basel, Freiburg, Mulhouse, Strasbourg, Colmar, Karlsruhe, Schopfheim
- Landesgewerbeamt Baden-Württemberg
- TechnologieRegion Karlsruhe
- Wirtschaftsförderung Karlsruhe
- Wirtschaftsregion Dreiländereck-Hochrhein GmbH
- Wirtschaftsregion Freiburg
- Wirtschaftsregion Offenburg/Ortenau

Further information

www.upperrhine.com

