

Labour market move possibilities

03.02.2006

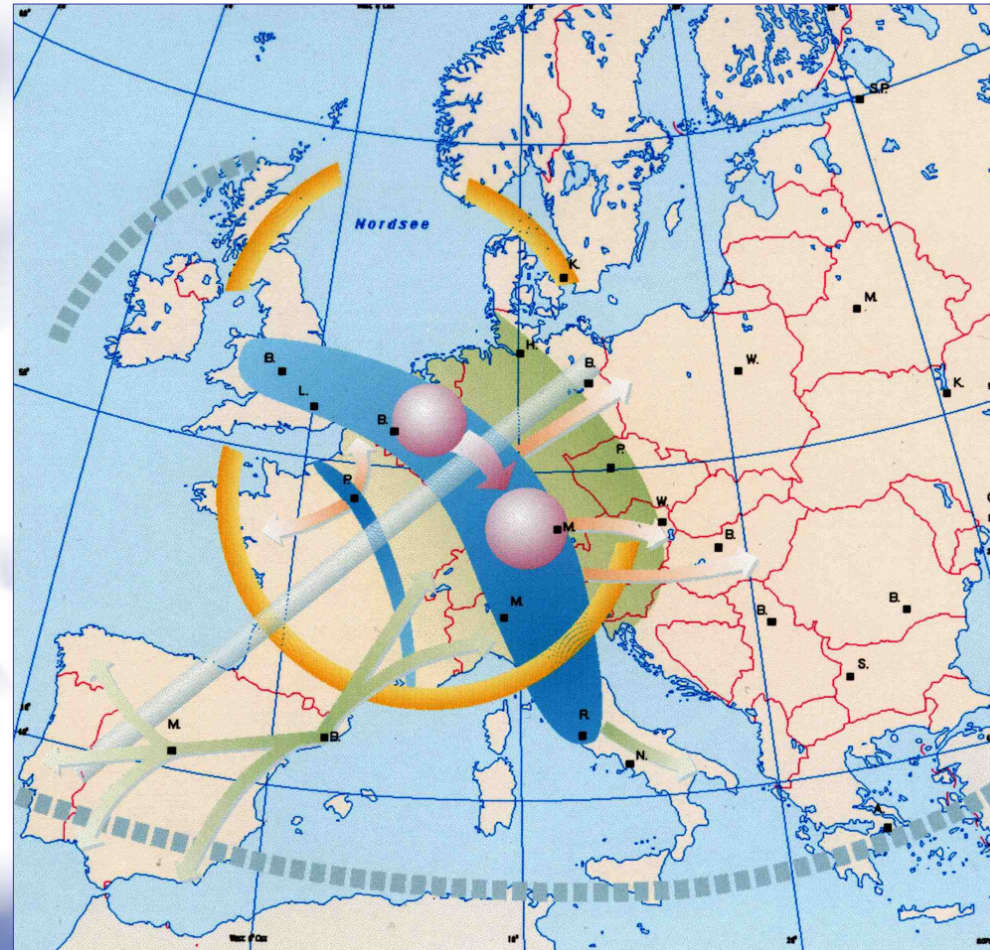


Upper Rhine

Overview

- Upper Rhine
 - Central location
 - Political and administrative structures
 - Geographic entity
 - Demographic data
 - Economic data
 - Cross-border cooperation
- REGIO BASILIENSIS
 - Functions and organisation
- Labour market
 - Labour force participation
 - Unemployment
 - Cross-border commuters
 - Trilateral information services

Upper Rhine: Location (II)



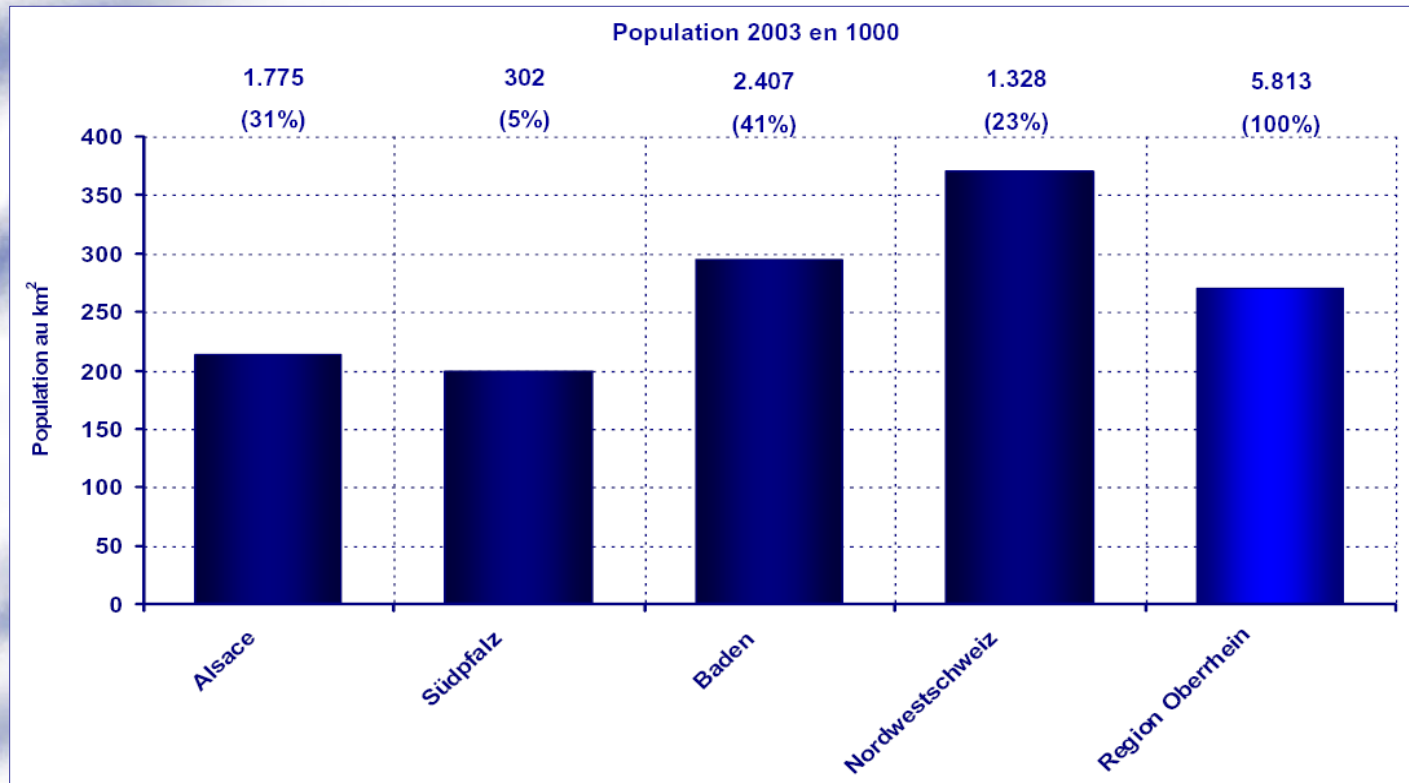
Upper Rhine: Political and administrative structures



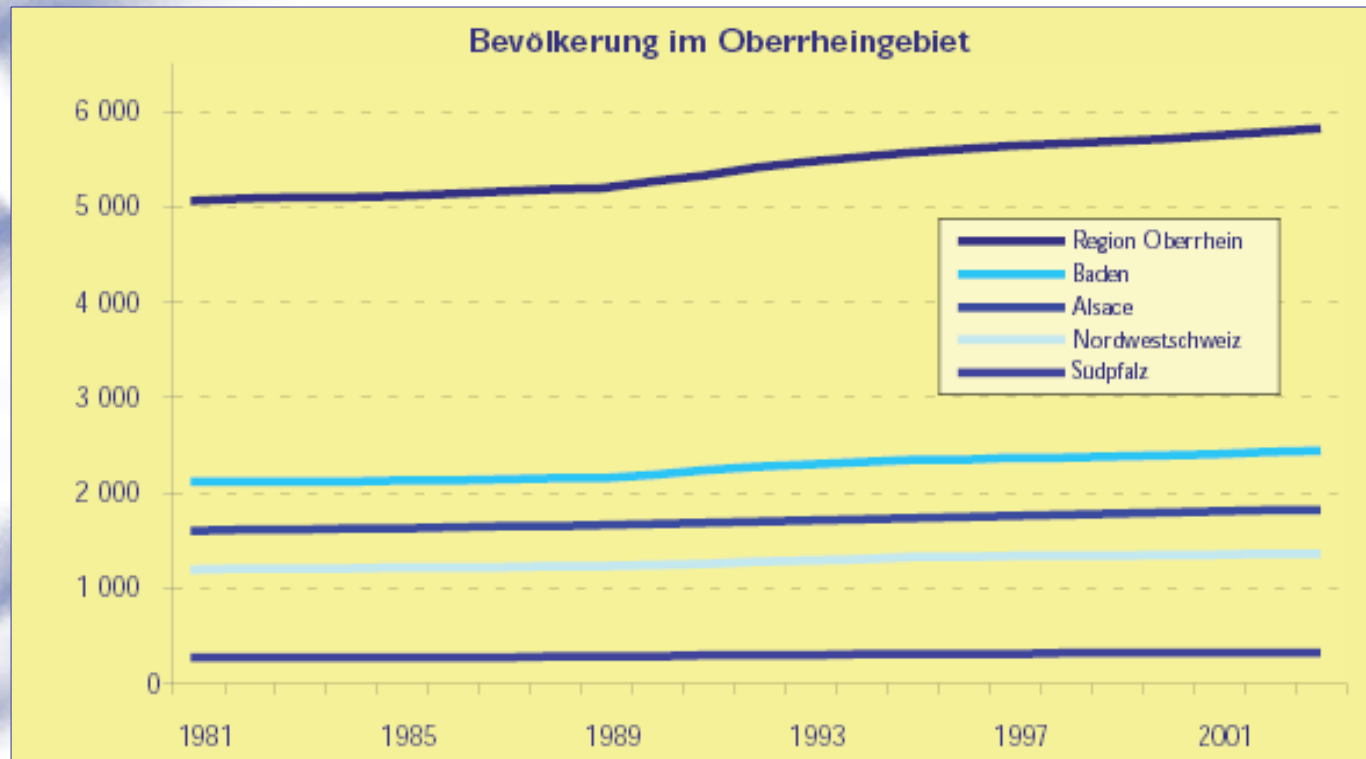
Upper Rhine: Geographic entity



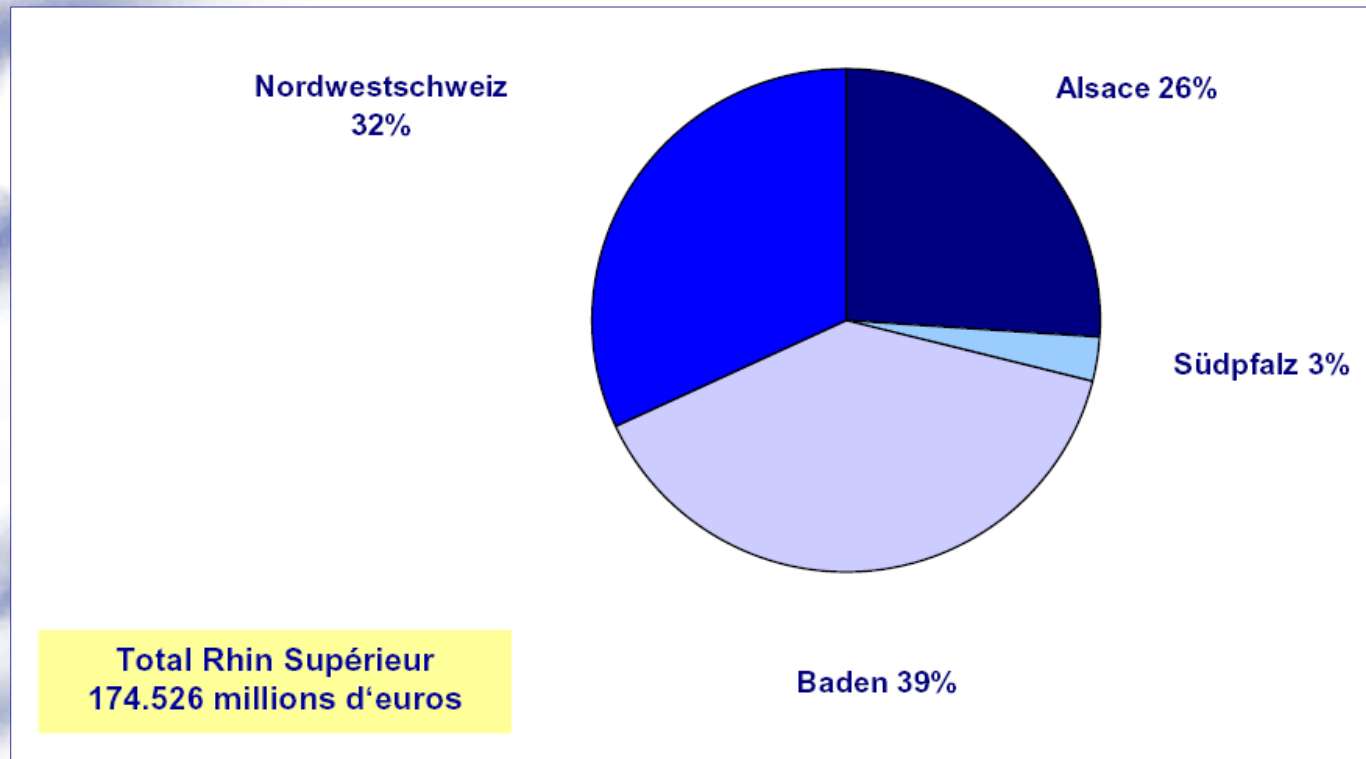
Upper Rhine: Population (I)



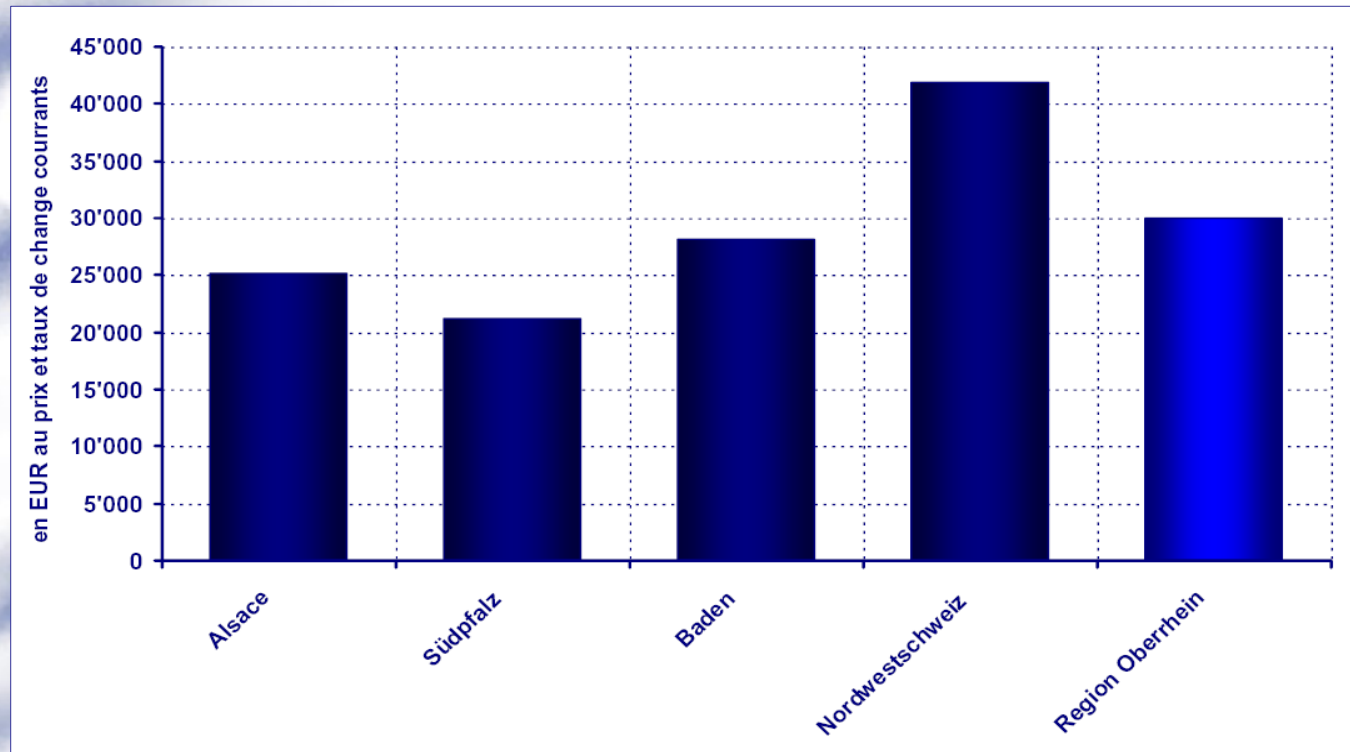
Upper Rhine: Population (II)



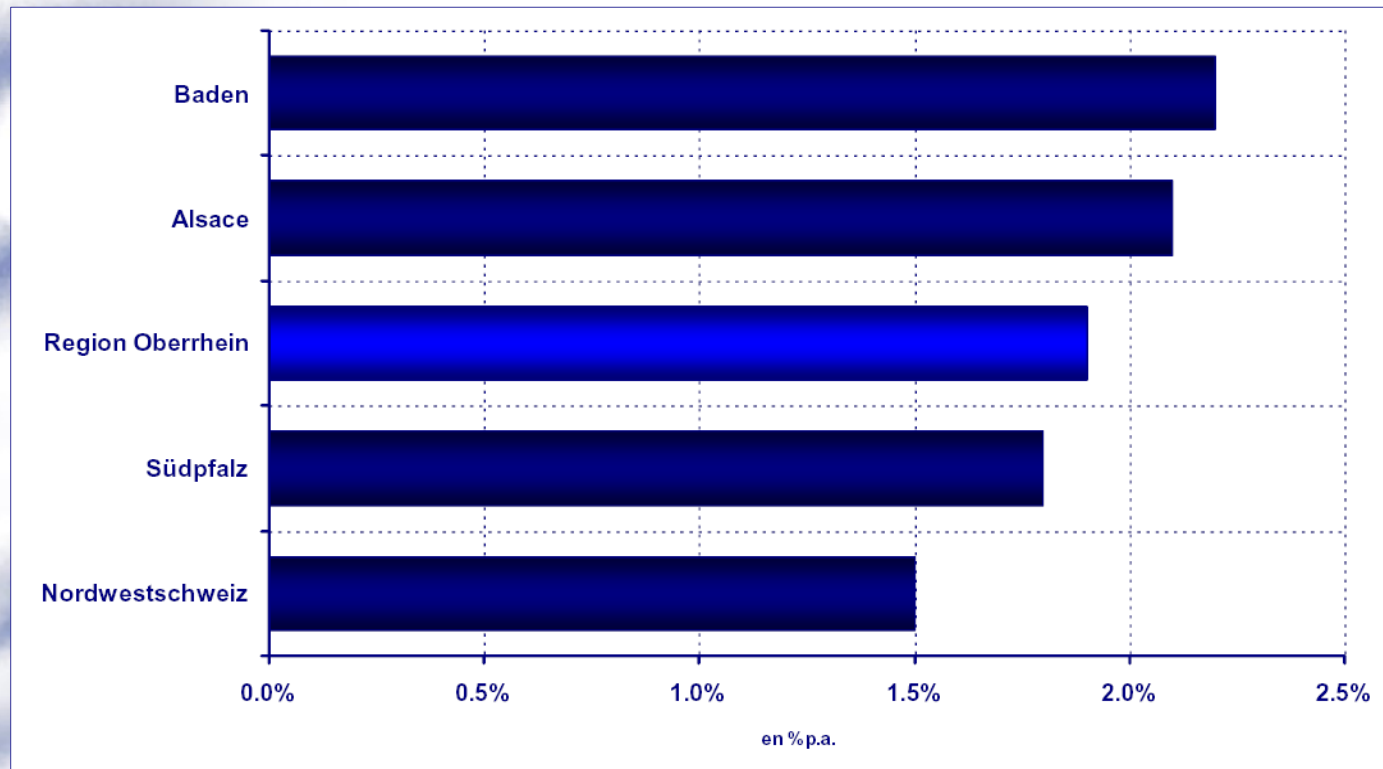
Upper Rhine: GDP (2003)



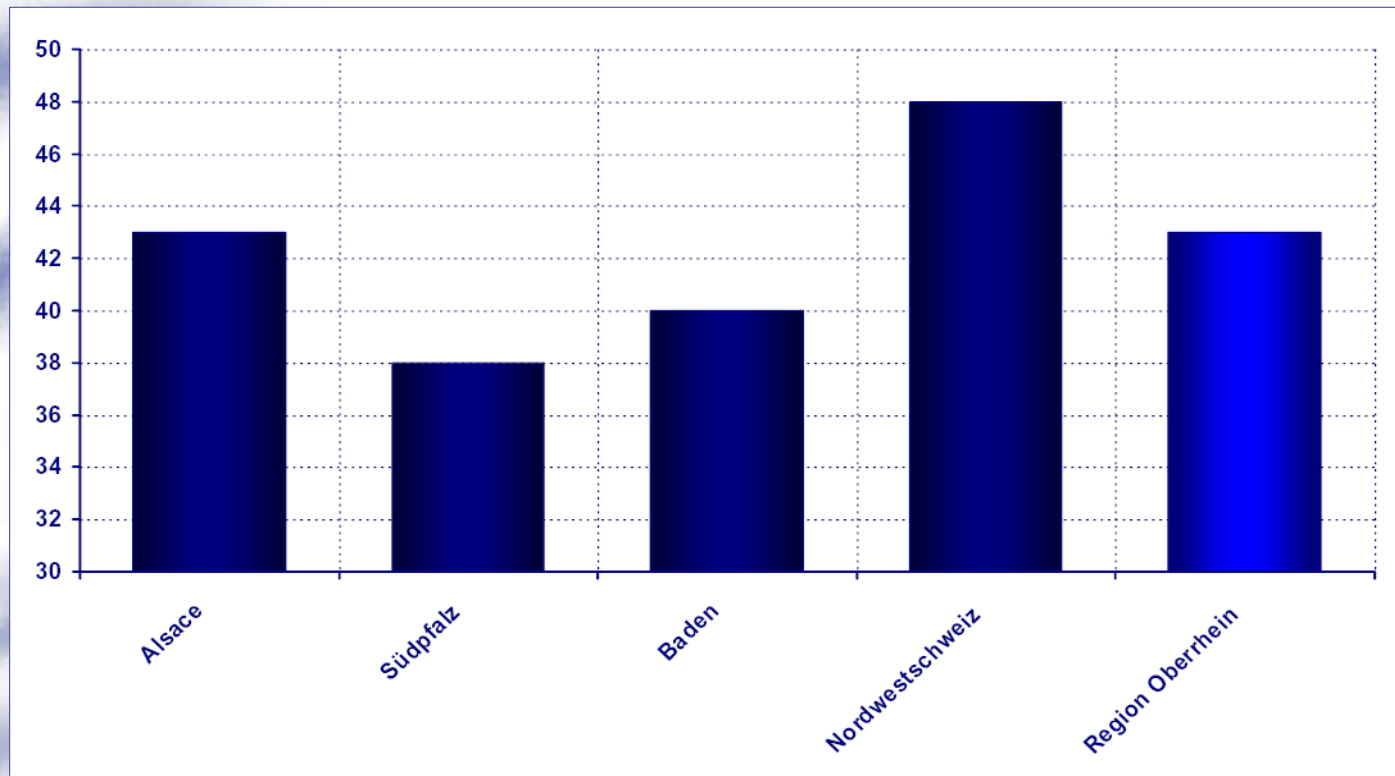
Upper Rhine: GDP / inhabitant (2003)



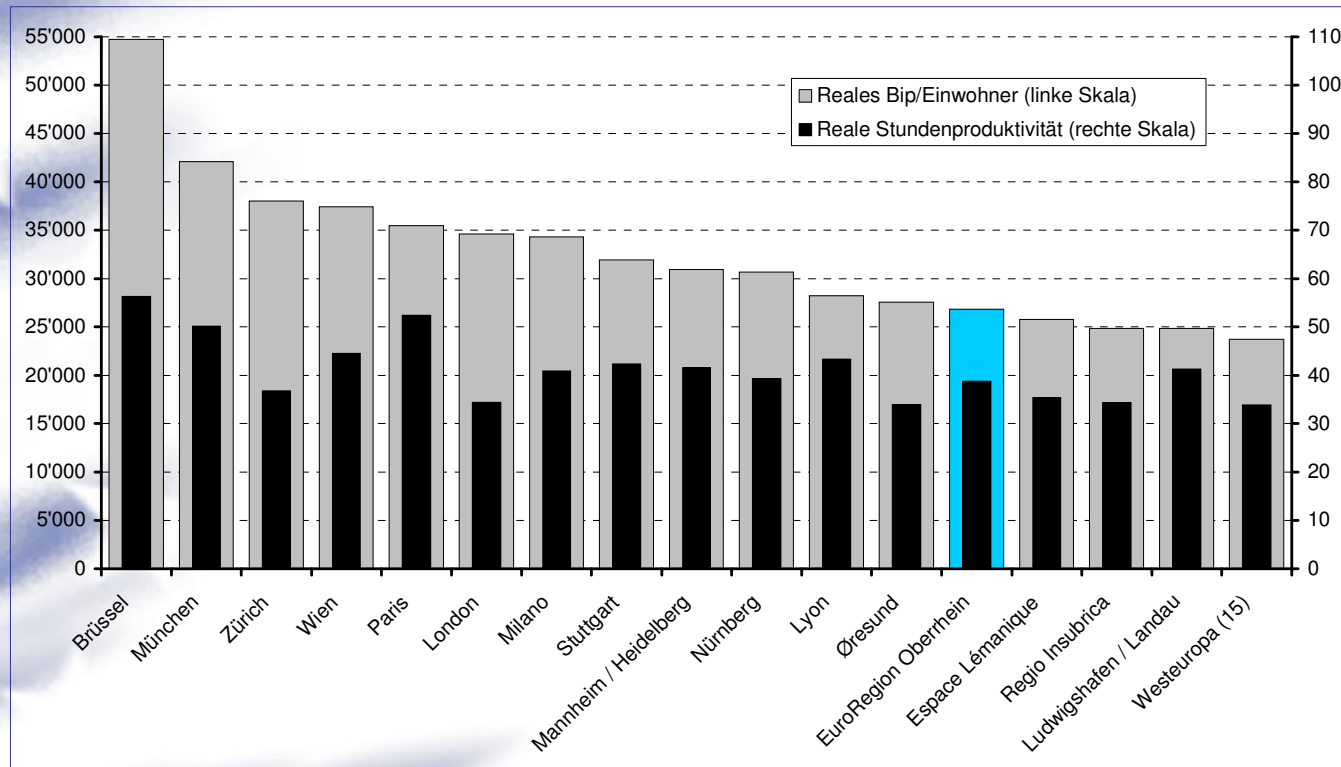
Upper Rhine: Growth of GDP (1980-2003)



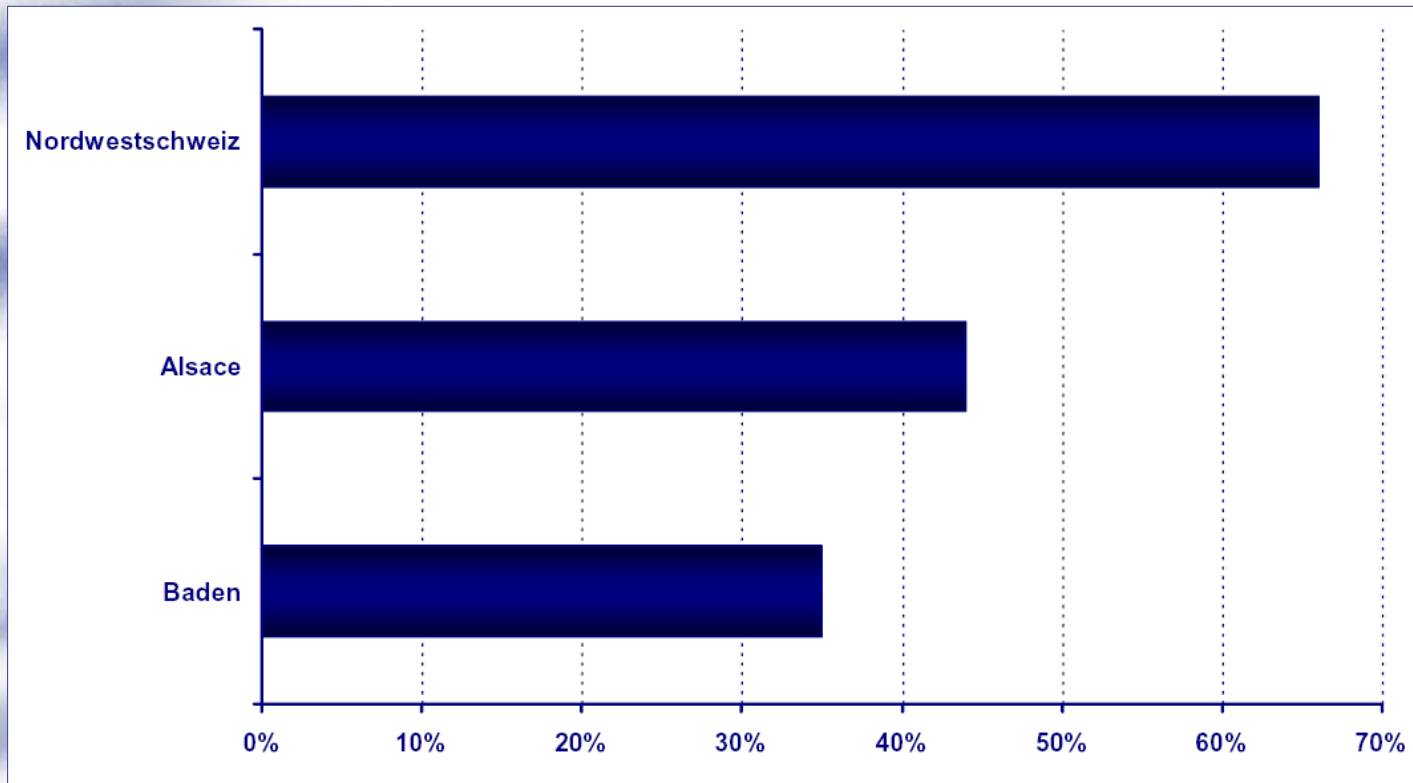
Upper Rhine: Hourly productivity of labour (2003)



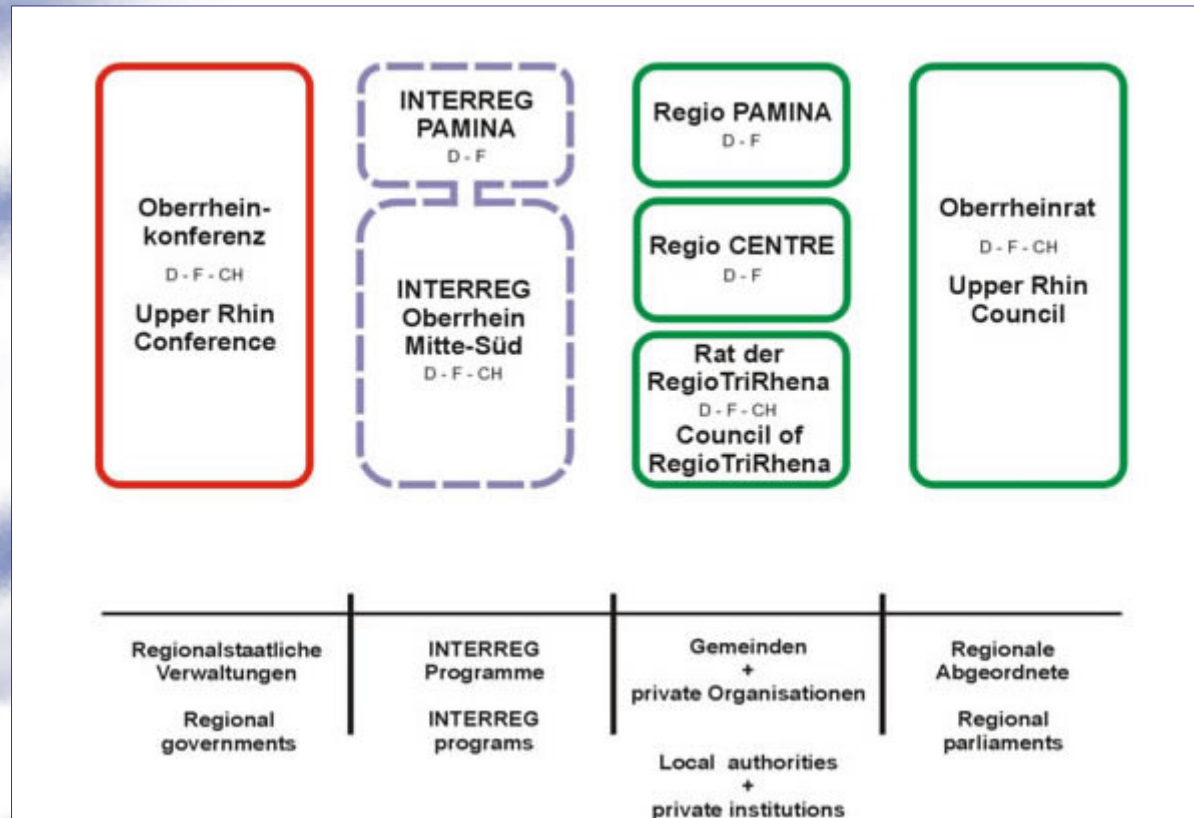
Upper Rhine: GDP / inhabitant and hourly productivity of labour (2004)



Upper Rhine: Export rate of industry



Upper Rhine: Areas of cross-border cooperation



Basel: Cross-border metropolitan area (I)



Basel: Cross-border metropolitan area (II)



REGIO BASILIENSIS: Fonctions and organisation



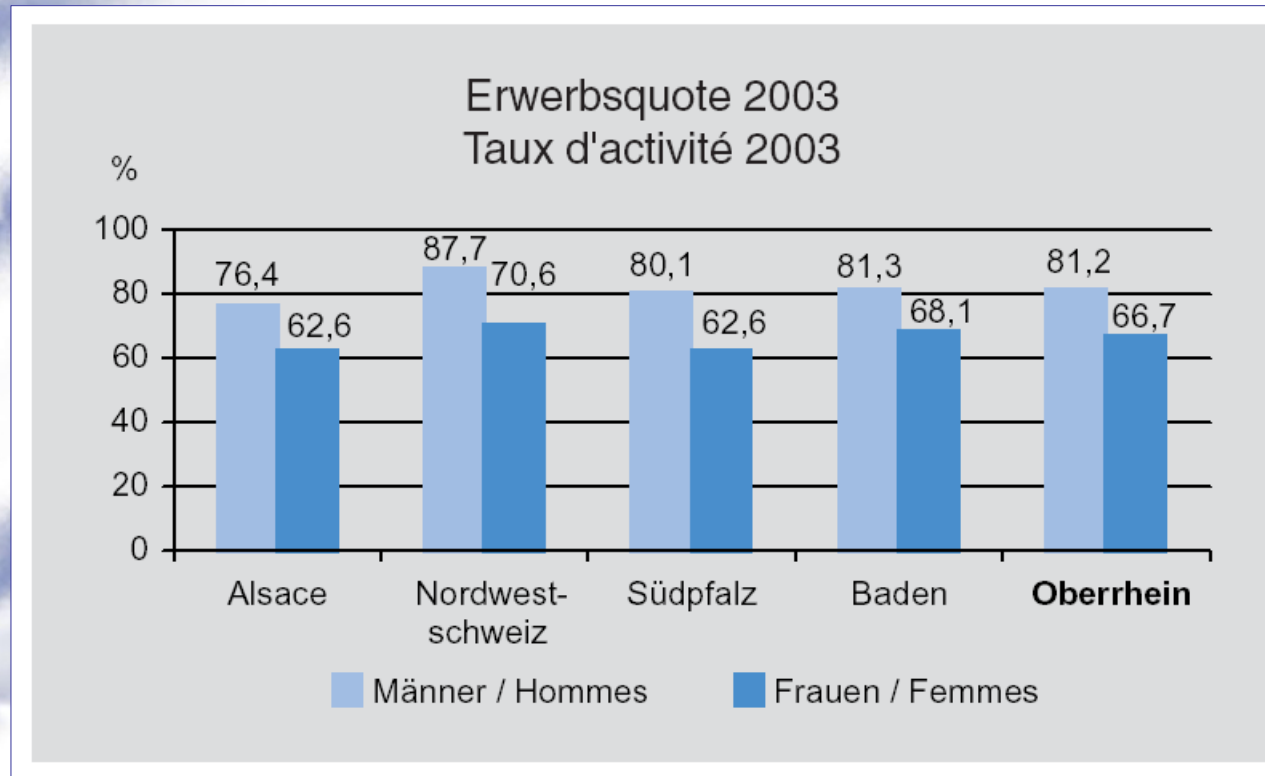
REGIO
BASILIENSIS



IKRB



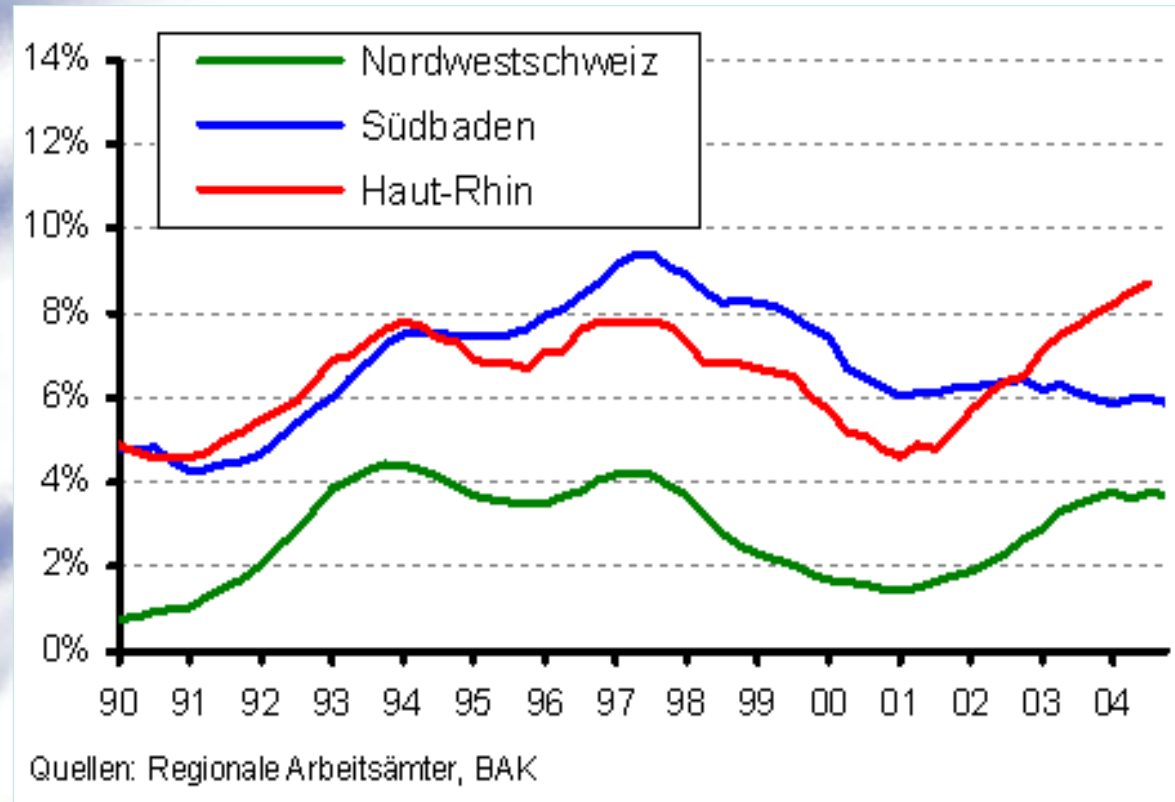
Upper Rhine: Labour force participation rate



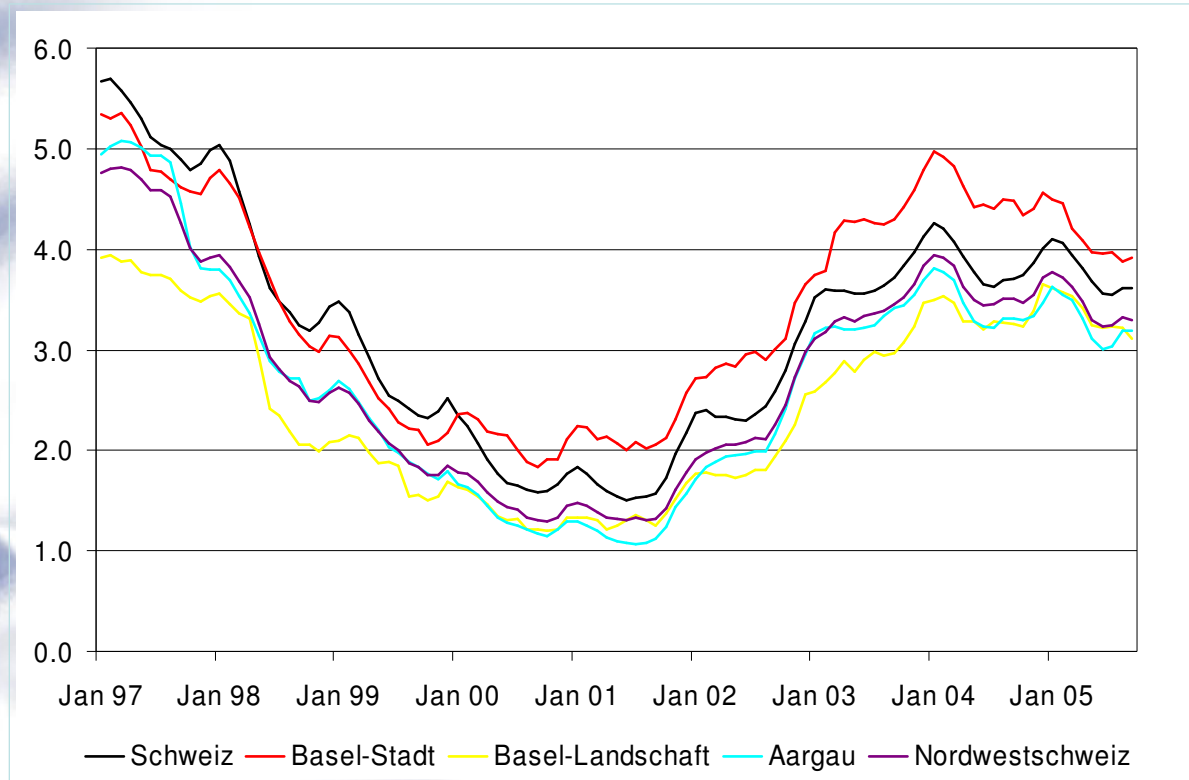
Upper Rhine: Labour force participation / branch of economic activity (2002)



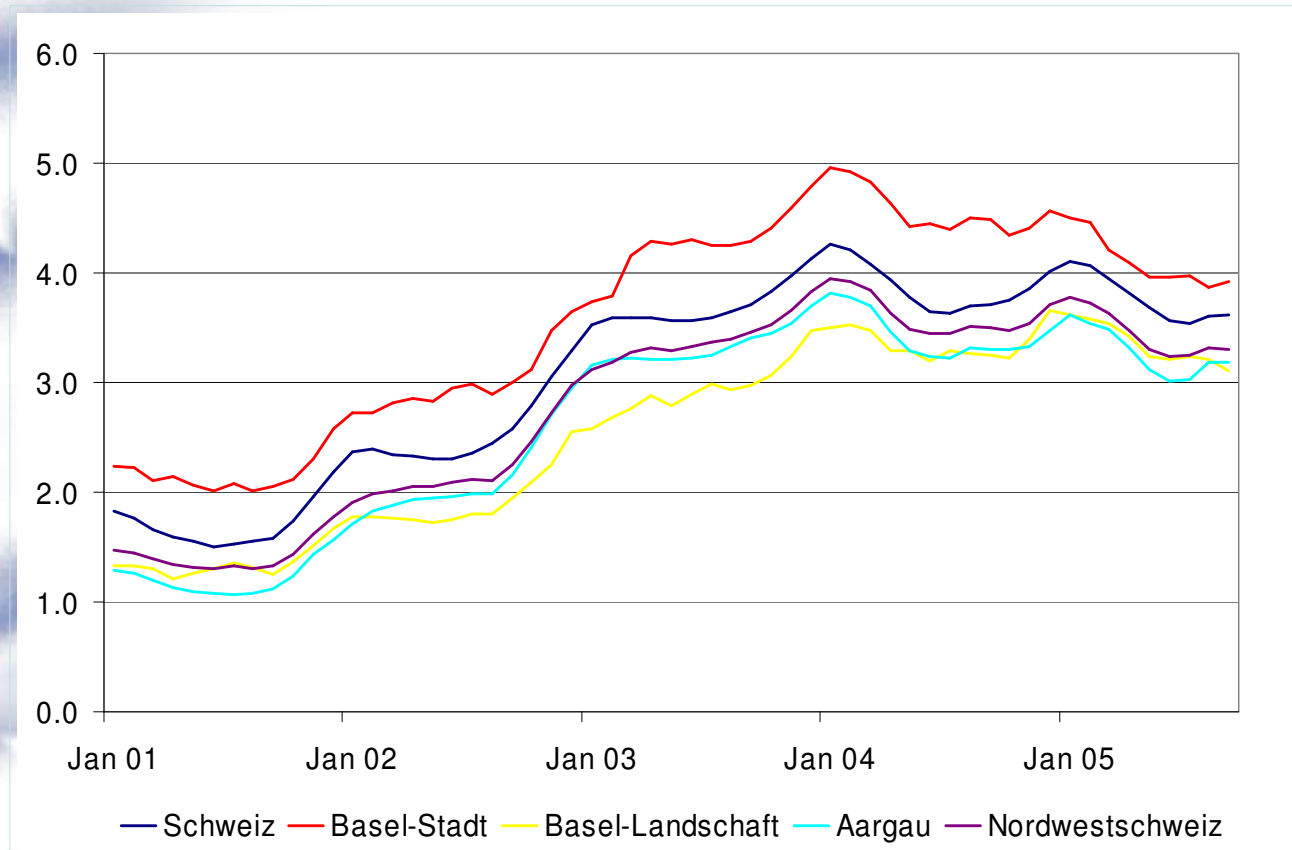
Upper Rhine: Unemployment



Northwest Switzerland: Unemployment (I)



Northwest Switzerland: Unemployment (II)



Northwest Switzerland: Causes of unemployment

- General poor economic situation
- Economic growth due to high productivity
- High unemployment in „new“ economic sectors – tertiary sector
- Enough job offers – demography problematic

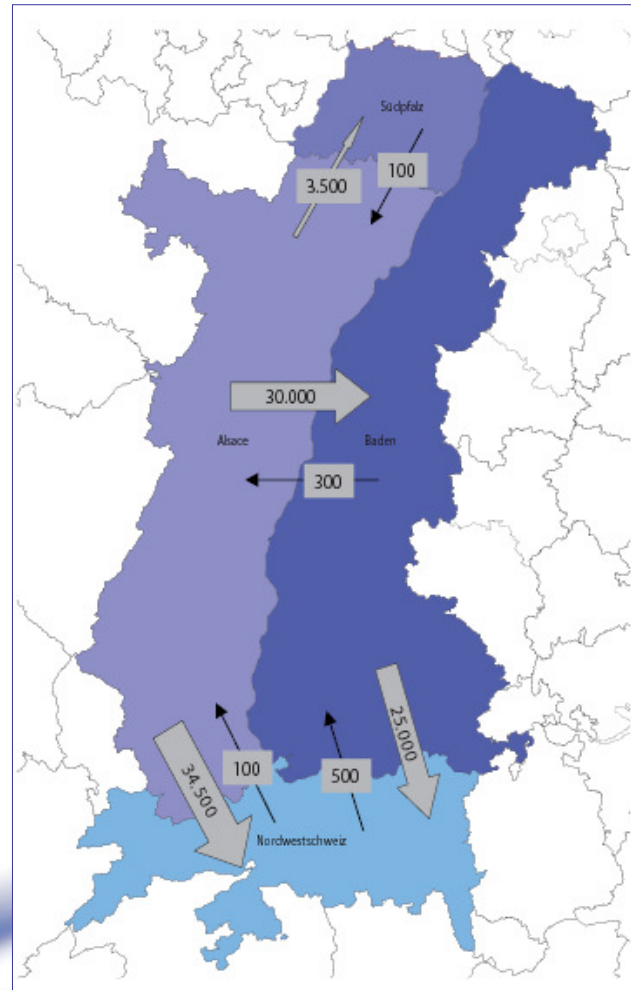
Northwest Switzerland: Characteristics of unemployment

- Collateral evolution of unemployment by men and women
- Unemployment
 - CH citizens – EU citizens 1 : 1.5
 - CH citizens – non-EU citizens 1 : 3.5
- No hardening of unemployment

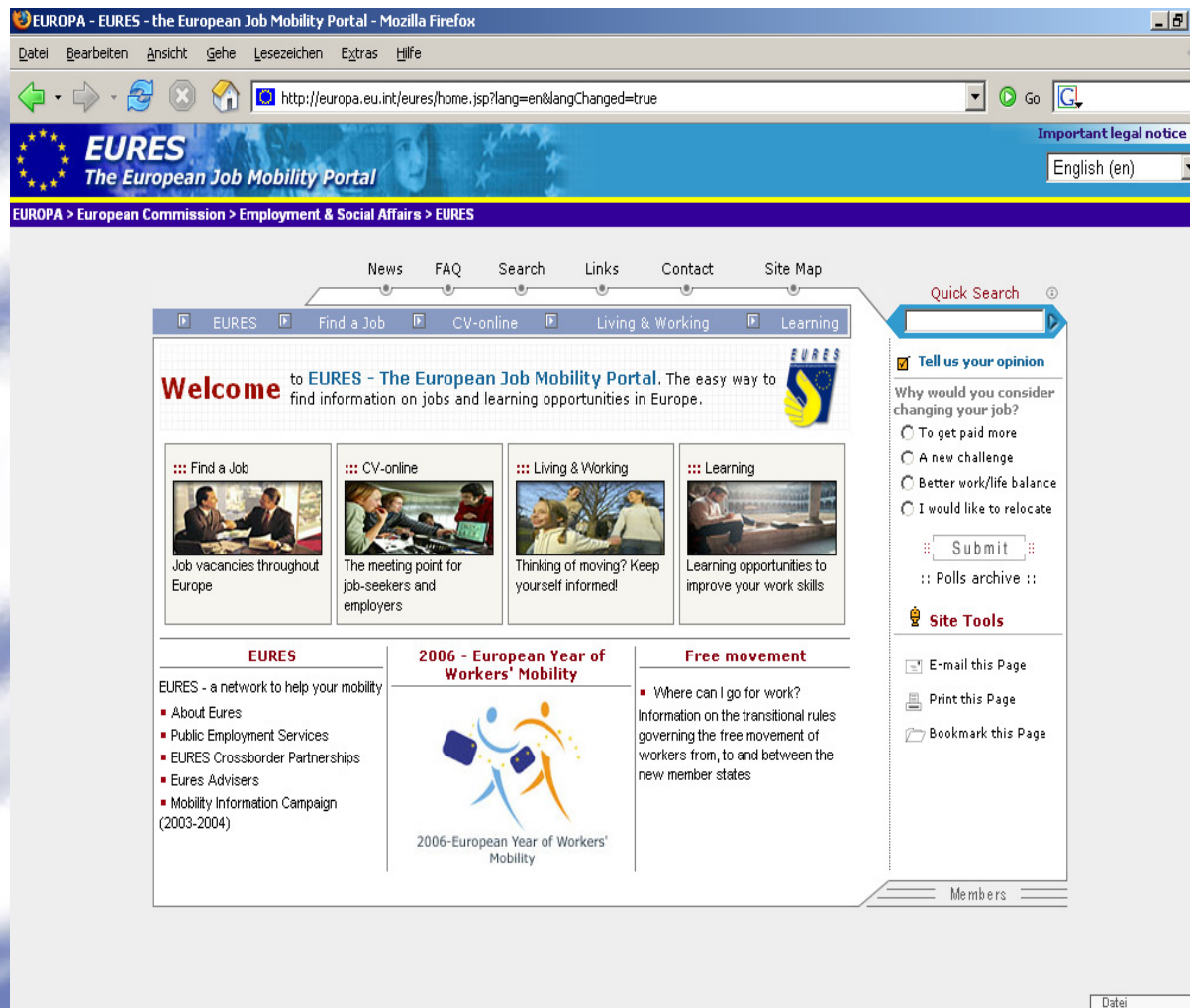
Northwest Switzerland: Conclusions

- No structural deterioration of labour market in recent past
- No rebound on labour market yet
- 2006: Economic growth should contribute to a slight reduction of unemployment

Upper Rhine: Cross-border commuters



EURES: EUropean Employment Services



EUROPA - EURES - the European Job Mobility Portal - Mozilla Firefox

http://europa.eu.int/eures/home.jsp?lang=en&langChanged=true

EURES
The European Job Mobility Portal

Important legal notice
English (en)

EUROPA > European Commission > Employment & Social Affairs > EURES

News FAQ Search Links Contact Site Map

EURES Find a Job CV-online Living & Working Learning

Welcome to EURES - The European Job Mobility Portal. The easy way to find information on jobs and learning opportunities in Europe.

Find a Job
Job vacancies throughout Europe

CV-online
The meeting point for job-seekers and employers

Living & Working
Thinking of moving? Keep yourself informed!

Learning
Learning opportunities to improve your work skills

EURES
EURES - a network to help your mobility

- About Eures
- Public Employment Services
- EURES Crossborder Partnerships
- Eures Advisers
- Mobility Information Campaign (2003-2004)

2006 - European Year of Workers' Mobility

2006-European Year of Workers' Mobility

Free movement

- Where can I go for work?

Information on the transitional rules governing the free movement of workers from, to and between the new member states

Quick Search

Tell us your opinion
Why would you consider changing your job?

To get paid more

A new challenge

Better work/life balance

I would like to relocate

Submit

Site Tools

E-mail this Page

Print this Page

Bookmark this Page

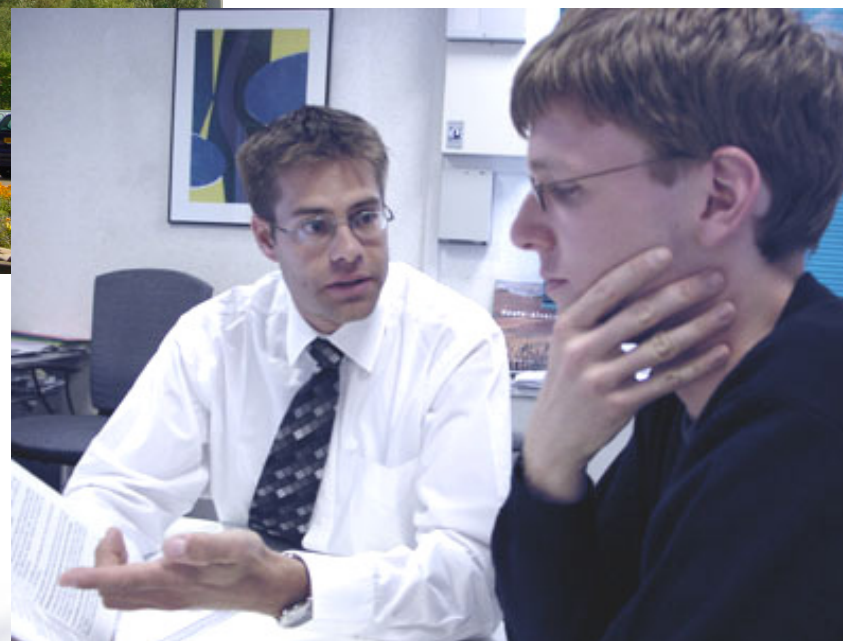
Members

Datei

EURES-T Upper Rhine



INFOBEST network



Thank you for your attention!

